

This Expression of Interest is made by peckvohartel, a national architectural practice with strong ties to the Faculty of Architecture, Building and Planning and The University of Melbourne.

1. BUILT PEDAGOGY

A learning environment

The new building must embody and demonstrate the advances in thinking and in the practice of architecture and its allied professions of Planning, Landscape Architecture and Urban Design. It can do this through a variety of means; either by complete transparency, allowing the internal workings and workers and their work product to be visible, or by capturing in its built fabric and external imagery the spirit of new ways of work and working.

The aspirational brief requires that the new building will demonstrate an outstanding level of quality in both the processes of design and development and in the finished product.

Outstanding Work of Architecture in Appearance and Function

The University of Melbourne Faculty of Architecture, Building and Planning have been housed in a variety of ways over the last 50 years.

In that time the founding principals of peckvohartel have been integrally involved with the Faculty; in fund raising for the construction of the current school, as office bearers (President, and Secretary) of the Student Club, as undergraduates and post graduates, as tenured and part time staff, as guest lecturers and assessors and as committed alumni.

During this time the Faculty has been housed in recycled army sheds on campus, other buildings on and off campus, in partially complete buildings, in buildings whilst significant construction works were being undertaken and most recently in a multi storey dysfunctional building



One National Circuit, Canberra

We acknowledge that the opportunity now exists to demonstrate that an exceptionally well designed building can contribute to:

- o the university precinct in which it is located,
- o the image of architecture,
- o the debate on architectural merit and
- o the quality of architectural education at all levels.

Outstanding Work of Urban Design Connecting to the Campus and to Community

The University campus has changed significantly over time. Dedicated Faculty precincts have been eroded away with demand for new buildings to house new disciplines, the expansion of existing precincts and the need to accommodate substantial increases in student numbers.

The new Melbourne School of Design must be considered as a building within its precinct; it must address the urban design and interconnectivity required and demonstrate through its built fabric the strongest connection to its situation in time and place.

Advanced Construction, Structural and Servicing Techniques

The design of the new building will need to take into account and incorporate advanced construction techniques and advanced technology within the parameters of 'value for money' and sound design principles.

Integrated with the Natural Environment

Whilst following the principles of sound Ecologically Sustainable Design the building must communicate with and associate with the natural environment.

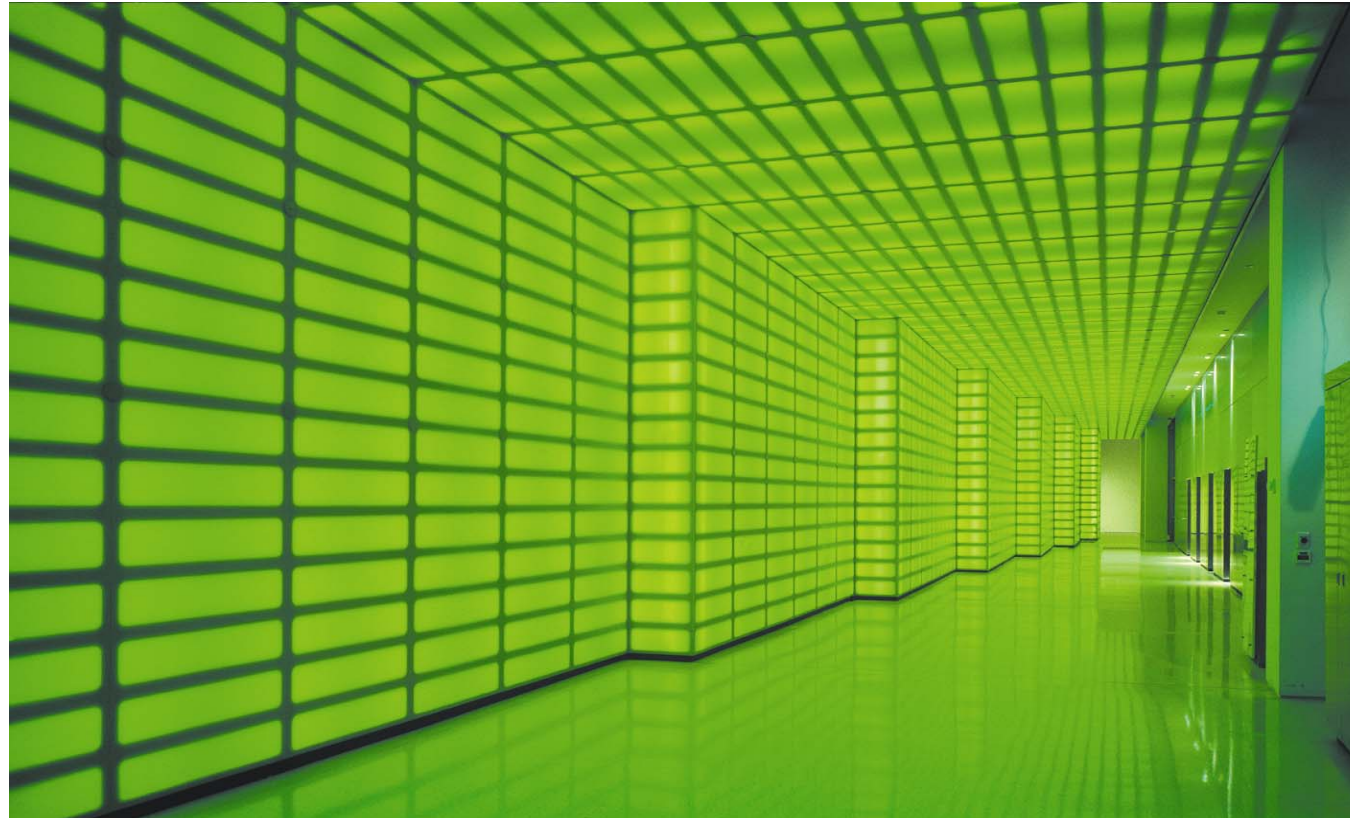
Openable windows, focused material selection based on natural materials, minimisation of the use of energy, use of landscaping within and without the new building are amongst the design criteria that will be applied to the new building.

Building Will Communicate Ongoing Work by Enabling Completed and In Progress Work by Staff and Students to be Visible

The stated goal of achieving maximum visibility of the activity in the building will be achieved, in part, through transparency, through the design of the building which should allow the work of staff and students to be on view to the university at large. Through the positioning of building entries, the building's interaction with its frontages will make the building an exciting environment to pass, peer into and experience.

Open for Discussion Exhibitions and Displays.

The new Melbourne School of Design must be welcoming to all; it must allow the university community access to exhibitions and displays and communicate with and engage the academic and student community in the built environment and artistic and social debate. To achieve this, the building must provide an aura of 'welcomeness' and functionally the building must be able to provide round the clock access and a secure environment.



Refurbished Foyer, 473 Bourke Street, Melbourne

2. THE ACADEMIC ENVIRONMENT

Inspiring Work Environment for Staff and Students

A number of functional goals must be achieved to create a satisfactory physical academic work environment, including a work environment:

- that is appropriate for an academic institution
- that has sufficient allocated space for each student to feel that they 'belong' and that there is a place for them to call their own (this should not preclude the idea of 'hot desking' or 'hoteling' or other such shared arrangements)
- that is appropriate in all services (such as temperature, lighting, technology), has an appropriate acoustic performance, provides natural ventilation and access to natural light) and an appropriate level of security
- that is available without discrimination 24 hours a day to enrolled students and staff.

A new building must provide the opportunity to create a full range of work environments to serve all levels of students and staff. It is understood that the building must be flexible and adaptable over time to allow a full range of work environments to be created within the building.

Consultation and workshops with the faculty and students must be undertaken at the outset of the project to understand the needs of all users of the building. It is likely that staff and various levels of students will each express different functional needs.

However, there are common facilities that all users will require including;

- entry points
- toilets
- vertical transportation
- large teaching spaces
- exhibition spaces
- research spaces
- workshops
- library
- café
- meeting points (both accidental and contrived)
- circulation spaces

These common facilities must cater for the full range of categories of users, providing an appropriate level of facility for each user.

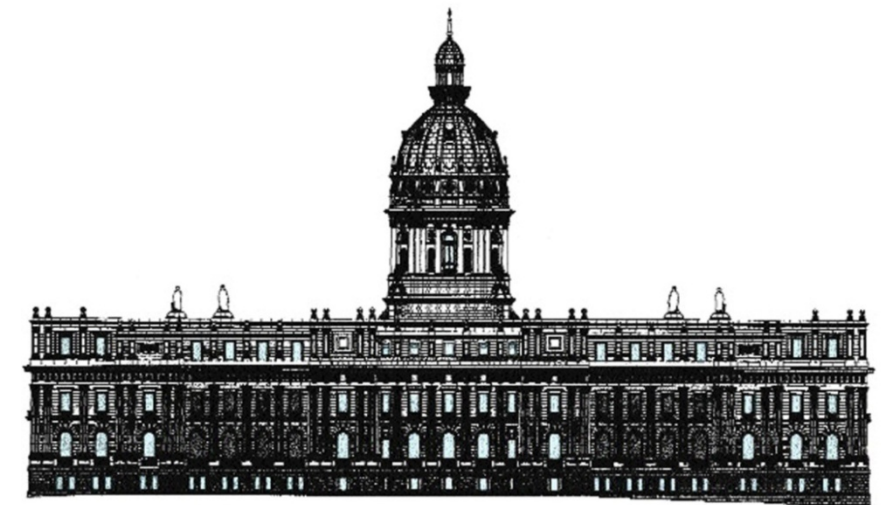
High Quality Research Outcomes

Research areas must allow for a full range of opportunities for work from quiet individual research to collaborative work with other academics and students. The building should not dictate how this work must be undertaken; rather it should provide the opportunity for the individual to select their own environment for research to suit their individual needs.

Research work must be able to be undertaken in both a single person and collaborative environment. Access to appropriate servicing, and security as well as access to studio, laboratory, library and workshop should be mandatory to allow high quality research outcomes to be achieved.

Faculty Goal of Attracting and Retaining the Best Staff

Flexibility and choice in work styles will support the goal of retaining and attracting the best staff. In addition, a work environment that includes state of the art facilities, attention to detail, an architecturally inspiring environment will provide a sound basis for a stable and exceptional staff body. However, the single most influential factor to facilitate the retention of staff will be the people that work there; other professionals will seek inspiration and collaboration from the staff compliment.



The Completion of Parliament House Victoria

3. THE DESIGN STUDIO

Outstanding teaching and learning environment for staff and students

The design studio has been the traditional method of design teaching at the University of Melbourne. The studio has changed format and interpretation over time and the concept should be work shopped with stakeholders to 'flesh out' and understand the interpretation and implications of university studio accommodation.

Professional design offices often take on the format of Design Studios. The peckvohartel offices across Australia have taken on a design studio format. Both old and recent graduates feel comfortable in this environment. The studio environment evokes a collaborative and open office and in peckvohartel's experience, maintains a flat organizational structure where design is valued and all design contributions are appreciated. Personnel are peckvohartel's most valued asset and in the same way, The University of Melbourne values its student and staff population.

Range of formal and informal teaching and learning spaces

Just as in the office environment, there must be a range of formal and informal spaces. Given the open design studio environment there must also be a range of accommodation to cater for different ways of working and the need for both individual or collaborative work and the support facilities that are needed.

The space provided must maximize and encourage both the formal and serendipitous interaction between students at all levels. Such interaction can be fostered in shared or common areas and by the transparency of work areas and exhibition spaces.

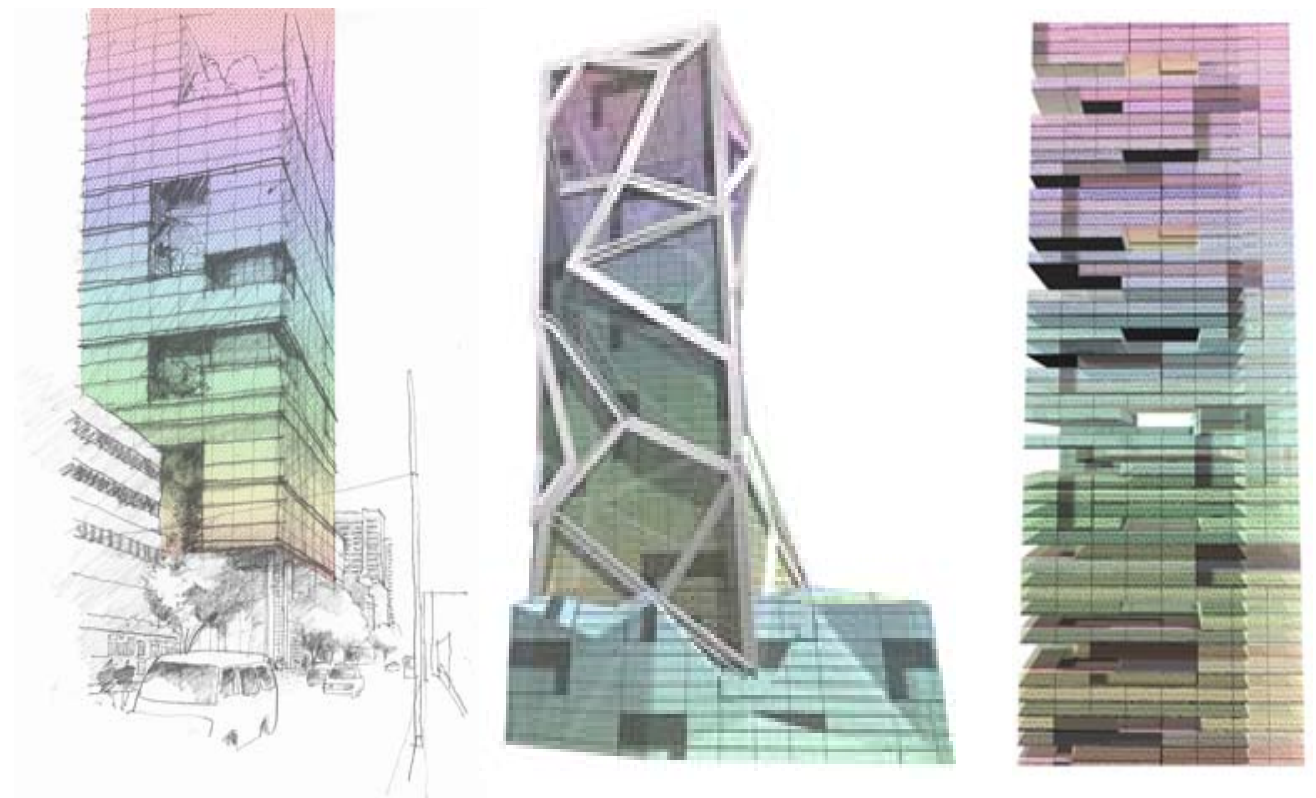
With transparency acoustic and visual privacy must not be compromised. In all formats of learning spaces flexibility in layout and the provision technology cannot be compromised.

Teaching and learning spaces must be based on advanced theories of studio and classroom design and the teaching staff's input into determining the format of the teaching spaces will be invaluable. Within studio spaces, just as in an open plan professional design studio, interaction and work styles must be translated into the FF&E required to support a studio environment.

A teaching Design Studio must provide an environment where an individual can freely explore ideas, experiment, and examine broad social and physical issues in the built environment. The freedom to explore and experiment, that cannot be replicated in a professional office where commercial reality provides limitations for both staff and students.



The Westin Hotel Melbourne on Regent Place





National Museum of Australia

4. LIVING BUILDING

peckvohartel employs sustainable development measures as an holistic approach to design.

We recognise that a sustainable approach to design spans many facets of a project; from careful siting, energy and waste management, the incorporation of innovative technologies, the selection and application of materials based on knowledge about their content, manufacture and installation, to life-span projections for sustainable management.

peckvohartel designs are project particular and incorporate carefully considered methodologies to deliver intelligent and ethically conceived projects which support and protect Australia's unique environment, our quality of life and our economic future.

In addition, we use the nationally recognised Green Star system to identify environmental initiatives and incorporate best practice proposals that can be successfully and easily managed. peckvohartel's in-house team of Green Star design professionals are core members of all project teams, and provide proactive, relevant and measured advice on the inclusion of environmental and social sustainability initiatives.

We understand this project constitutes a 'once in a lifetime' opportunity for The University of Melbourne to provide a living building that demonstrates and advocates these principles, and see this as a key driver for the design of this project.

The ability to provide a built environment that can be flexibly and appropriately adapted for multifarious use, and in direct response to changes in local climate conditions is to be honoured. We understand that as a teaching and research institution with particular focus on the built environment, this building will need to provide systems that manage these responses in a transparent and clearly considered way, and will also need to provide clear opportunities for user participation in these processes.

peckvohartel has previously been involved in a number of benchmark projects of this type in Australia.

peckvohartel completed the first 5 star rated tenancy fit-out for Land Victoria which involved significant research, the development of new materials and fabrication techniques as a commercial offices exemplar, and the development of a design that could be used by Land Victoria to promote the successful application of environmentally sustainable design practice.

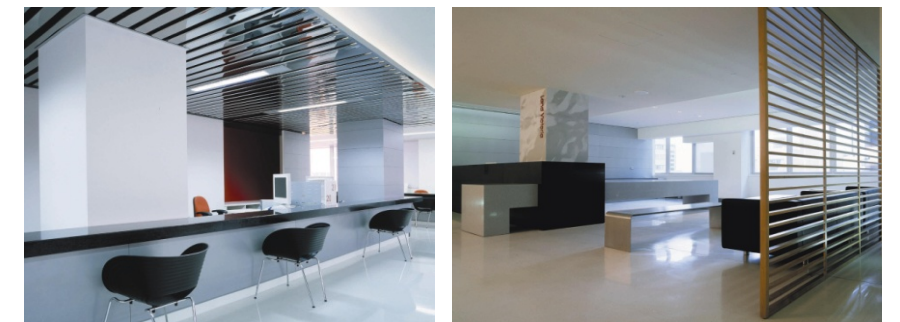
We have also completed a number of projects as Public Private Partnerships that require whole-of-life proposals, including long-term maintenance and management plans. Projects of this type operate similarly in that the ability to manage these buildings efficiently and well into the future forms a key principle of the project, and drives the search for an innovative solution.

In our experience, these projects have required emphasis on the developing education of users and the ability for these users to manage their environment locally.

In addition, our Senior Principals Yvonne von Hartel and Robert Peck have made key individual contributions to this area of the Australian construction industry.

Yvonne has been a long standing member of the Victorian Building Commission's Advisory Council which oversaw the introduction of 5 star ratings for residential buildings in this State. Victoria is currently the only State requiring 5 star housing in Australia and as such much of the new materials and practices for housing have evolved in that State. Yvonne is also Chair of the Sustainable Buildings Committee of Standards Australia.

Robert has represented the Building Codes Board at the Green Buildings Conference in Pittsburgh in 2003 as a member of the Australian Green Building Mission. Following the visit, the Australian Green Building Mission has been an exponent and supporter in the reduction of barriers limiting the use of environmental measures in the Australian built environment.



Land Victoria, Melbourne

5. CAPABILITY AND PROCESS

Projects of Similar Size Scale or Budget

peckvonhartel has completed many award winning major projects over its 30 years of operation ranging in project value up to \$200m and including seminal Melbourne buildings such as 1 Collins Street, 333 Collins Street and Canberra's One National Circuit and National Museum of Australia.

Registration with Local Boards

peckvonhartel is registered with the Architects Registration Board of Victoria (Registration Number C50134) and the Architects Registration Board of New South Wales (Registration Number 5960). We are also registered members of The University of Melbourne Panel of Architects.

Capacity to Deliver the Project in Melbourne

The office of peckvonhartel comprises over 50 professionally qualified personnel. The firm has delivered projects for the broadest range of market sectors and building types. The personnel for each project are selected for their ability to contribute to a particular project and this selection is not constrained by office location.

Design Team Nominated

The nominated design team for this project will be led by Senior Principal, Yvonne von Hartel. Yvonne will be the Principal in Charge for the project, and responsible for the design, production and procurement of the project. She will be directly supported in this by Jeanne Lee, Design Principal, and by peckvonhartel designers Grant Dean, Prani Hodges, Liz Bowra and Interior Design Principal, Lisa Capezio.

Proposed Method for Engagement with Client and Users.

peckvonhartel believe that the highest quality design outcome is the result of extensive consultation, a thorough understanding and test of the design brief, and nurturing positive ongoing relationships with all involved parties. We are committed to providing design and service that demonstrates this.

We anticipate that the principal stakeholders for this project will include;

- o The University of Melbourne Project Steering Committee,
- o Faculty of Architecture, Building and Planning representatives, and
- o Student (past and present) representatives,
- o The University of Melbourne Facilities Management

The proposed method of interaction with stakeholders is to:

1. Confirm Project Advisors (Project Control Group),
2. Identify the principal and other stakeholders for this project, and their degree of participation/ hierarchy,
3. Identify key areas of discussion for all major parties and areas that require specific inputs,
4. Prepare a timely and representative schedule of stakeholder consultations, and outline for the distribution of progressive
5. information regarding the consultation process in line with the design process,
6. Confirm the above stakeholders, hierarchy, areas of contribution/ input and schedule with the Client.
7. Confirm representatives of all stakeholder groups,
8. Establish timetable for consultation, and confirm with the Client,
9. Advise relevant parties of timetable and aims,
10. Commence interaction.

Preferred or Intended Process of Collaboration with the Faculty of Architecture, Building and Planning, and The University of Melbourne.

peckvonhartel understand that two of the key aims for this project are;

1. The timely delivery of an innovative, original, and unreservedly best practice design solution to support the delivery of programs provided by, or relevant to, the Melbourne School of Design, and
2. The use of the benchmark professional delivery of this project to provide expanded education opportunities for students of the school.

We acknowledge that a highly conversant teaching fraternity and increasingly conversant students of the Faculty have highly specific and relevant contributions to make to this project.

To facilitate the inclusion of these contributions, we intend to;

1. Establish Faculty and Education representatives,
2. Confirm these representatives with the Client,
3. Establish a preliminary schedule of workshops with these representatives to determine productive opportunities for involvement.
4. Prepare a project programme that includes 'mirrored' and prescient opportunities for investigation of the processes involved in the project and its delivery with both Faculty and Education groups,
5. Support the co-ordination of these opportunities, and
6. Prepare a programme of quarterly presentations to the Faculty to provide further broad education opportunities and dissemination of information regarding the project.



A peckvonhartel Christmas Party

6. MERIT

Throughout its 30 years, peckvonhartel have demonstrated an ongoing commitment to the design and delivery of innovative, and often pioneering solutions for the specific project challenge at hand.

These solutions are not limited to project type, time, location or scope, and are broadly recognised as outstanding contributions to the built environment by a broad range of awarding industry bodies.

Recognition of this contribution is demonstrated by the following industry awards;

Design Competitions

First Prize: 1 Collins Street Melbourne

Honourable Mention: Medium Density Housing Competition, Southbank Melbourne

First Prize: International Competition for Sandridge City Development Company's Redevelopment of Sandridge, Port Melbourne

Second Prize: Residential Club, The Peak, Hong Kong

Royal Australian Institute of Architects Awards

Merit Award for Conservation, Regent Theatre, Melbourne

Merit Award for Commercial Buildings, No. 1 Collins St

Honourable Mention: Pacific Dunlop Commercial Interior

Commendation: Mercer Campbell Cook and Knight Commercial Interior

Master Builders Association

National Partnering in Excellence Award, 2001

Winner Bovis Lend Lease, National Museum of Australia

National New Commercial Building Award over \$10mil, 2001

Winner Bovis Lend Lease, National Museum of Australia

National Commercial Builder of the Year, 2007

Winner Bovis Lend Lease, One National Circuit

National Commercial/Industrial Construction Award, \$50-\$100 million, 2007

Winner Bovis Lend Lease, One National Circuit

Property Council of Australia

Property Council of Australia Commendation Award 2002

The Westin Melbourne on Regent Place

Cement & Concrete Association Australia

Cement and Concrete Association Australia Award

No. 1 Collins St.

C&cAA Public Domain Awards 2003, Overall Winner

National Museum of Australia, ACT

C&cAA Public Domain Awards 2003

Winner, Garden of Australian Dreams, National Museum of Australia, ACT

Interior Design Awards

2005 Award for Corporate Design

Shortlisted, Department of Education, Science and Training Interior, VIC



The Regent Theatre



National Museum of Australia

General

Winner Major Tourist Attraction in the 2004-2005 Australian Tourism Awards

National Museum of Australia, ACT

International Blueprint Architecture Award, 2001

Best New Public Building, National Museum of Australia

IES Award of Excellence for Lighting Design, 2001

Meritorious Lighting Award, National Museum of Australia

Dulux Colour Award, 2001

Commendation for the National Museum of Australia

National Electrical Contractors Association, 2001

Excellence in Electrical Design and Installation, National Museum of Australia

Finalist Public Space/Retail, DuPont Antron Carpet Design Awards

National Museum of Australia

AISC Steel Design Awards, Industry Innovation and Project Delivery

Award, 2001 National Museum of Australia

NSW Illuminating Engineering Society, 2001

Award for Excellence in Lighting, National Museum of Australia

Illuminating Engineering Society of Australia and New Zealand Award

2001, 473 Bourke Street, Melbourne

Kenneth F Brown Asia Pacific Culture and Architectural Design Award

2003 Honorable Mention, National Museum of Australia

In addition, both peckvonhartel Senior Principals Yvonne von Hartel and Robert Peck have individually received an Order of Australia for their outstanding contributions to urban design, architecture, design and building.



333 Collins Street, Melbourne



No. 1 Collins Street, Melbourne